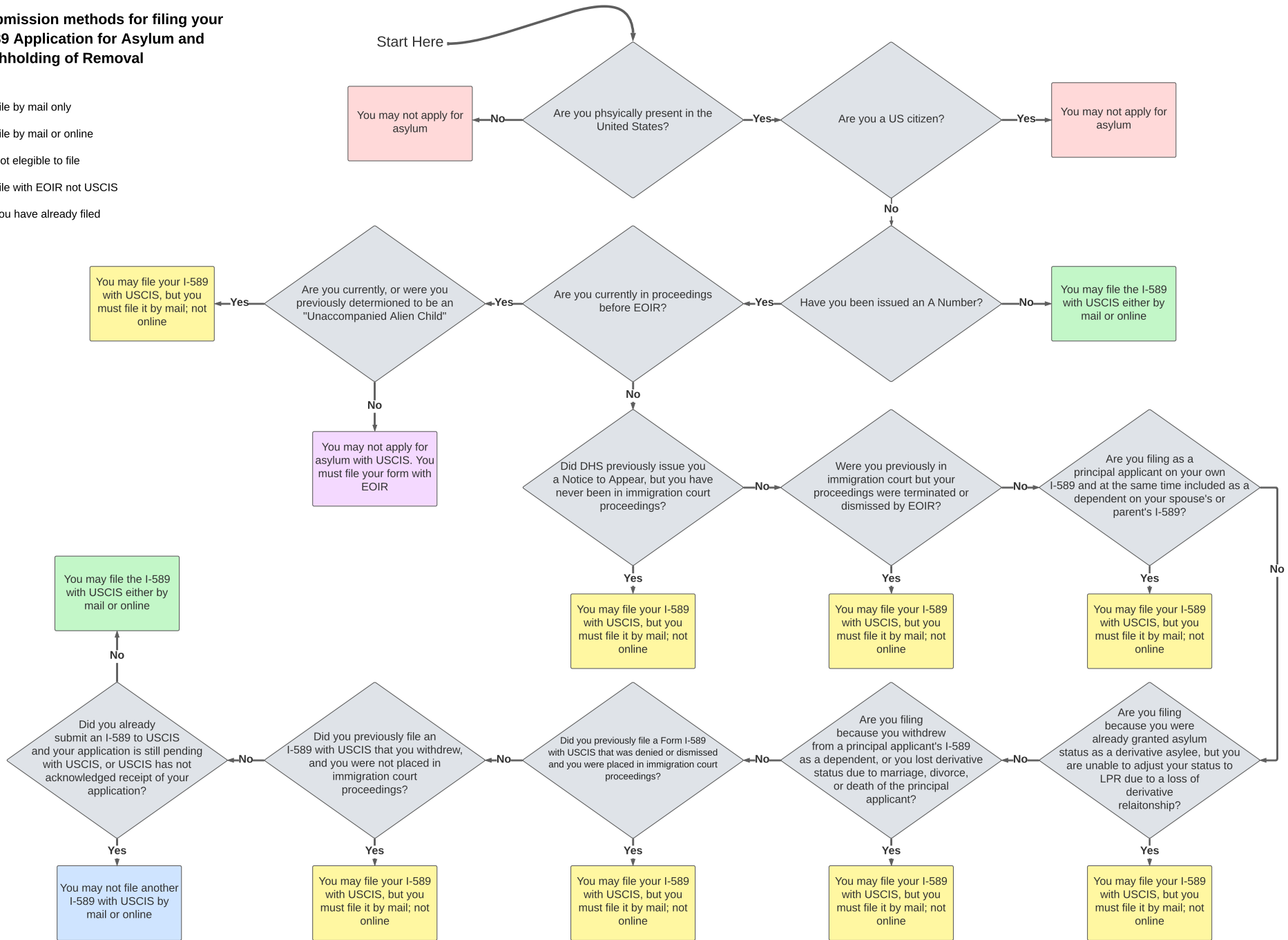


Submission methods for filing your I-589 Application for Asylum and Withholding of Removal

- Key**
- File by mail only
 - File by mail or online
 - Not eligible to file
 - File with EOIR not USCIS
 - You have already filed



All information on this flow chart has been taken directly from the USCIS Form I-589 Filing Instructions Tool found at <https://www.uscis.gov/humanitarian/form-i-589-filing-instructions-tool>.

This flowchart is not intended to be used as legal advice for your specific case. It is always advisable to consult with a licensed attorney to determine immigration benefit eligibility.